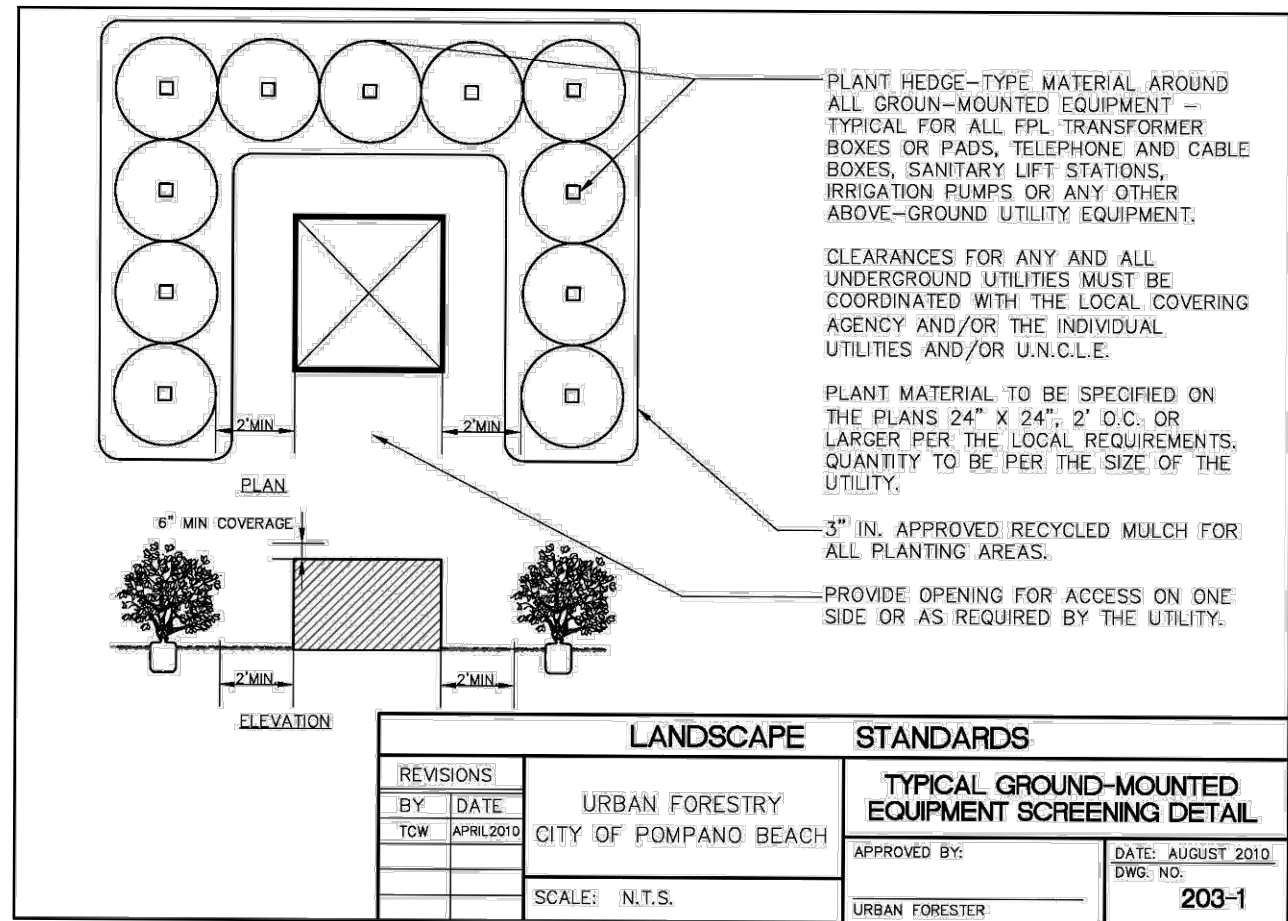


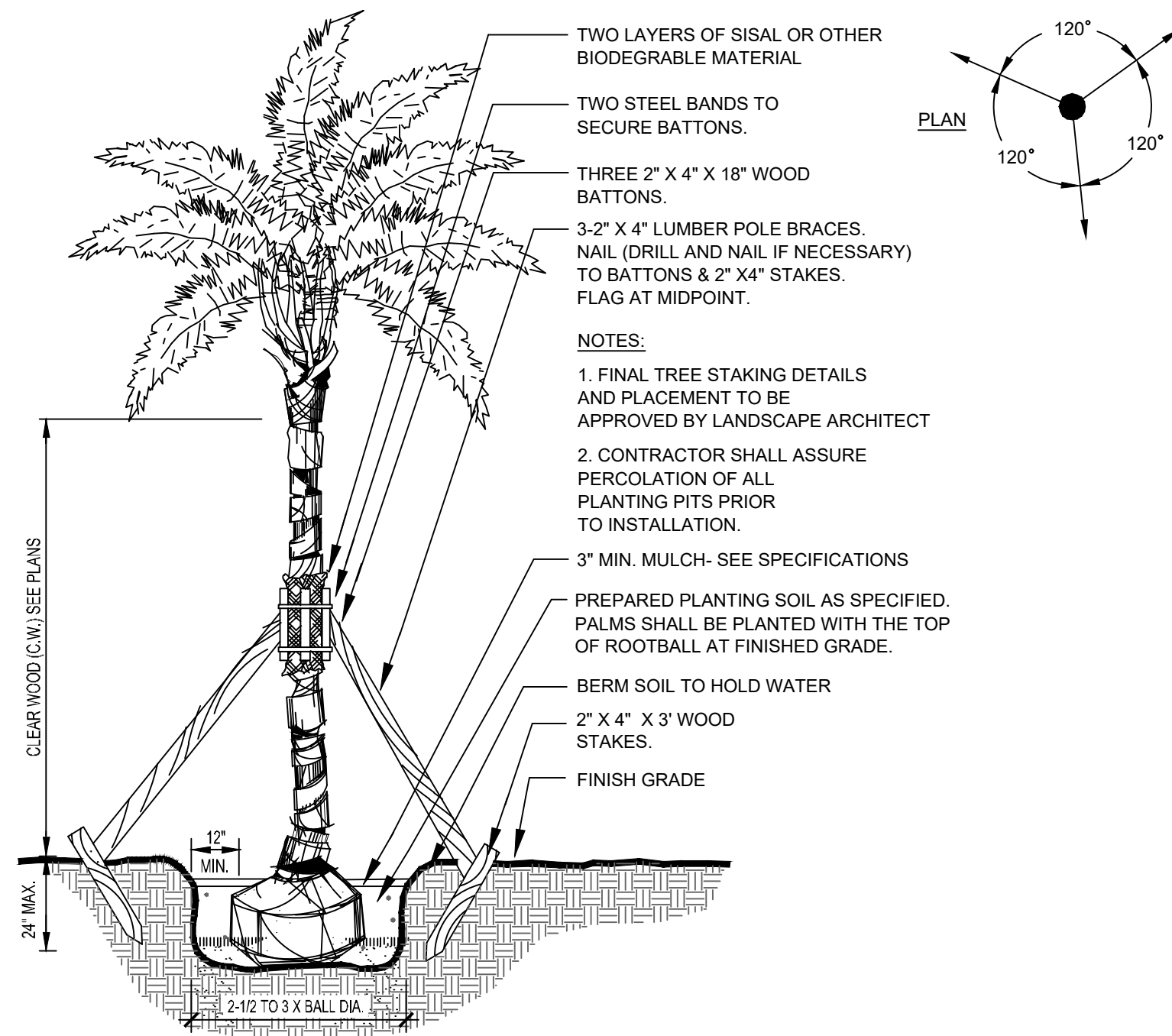
1 TREE
SECTION

NTS



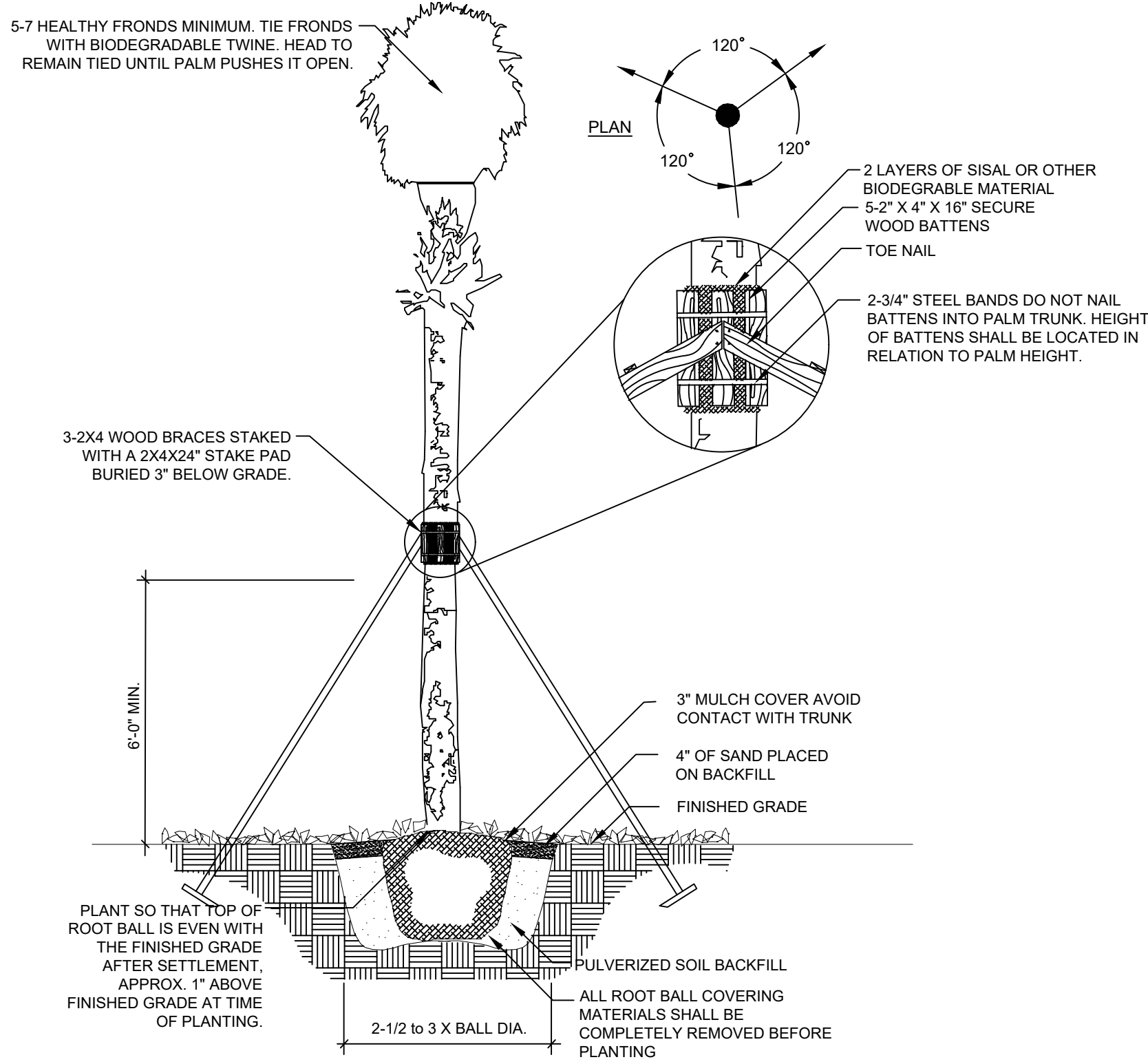
2 ABOVE GROUND UTILITY SCREENING
SECTION

NTS



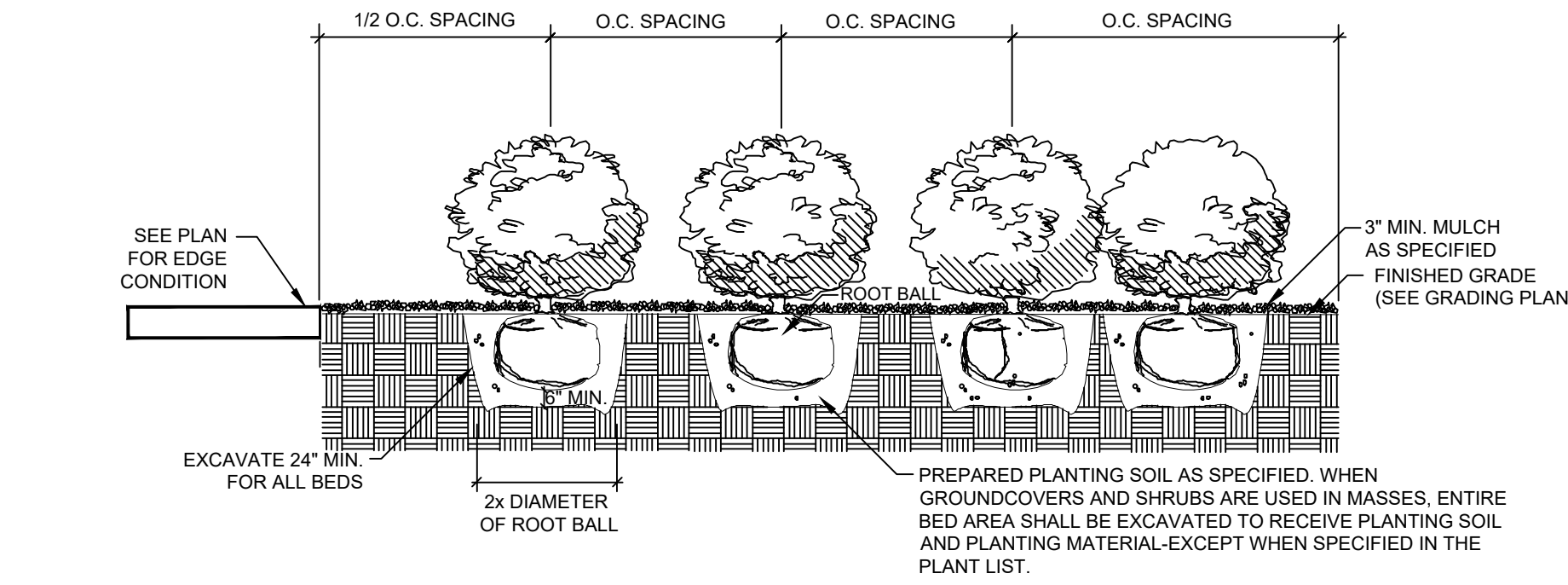
3 PALM (TYPICAL)
SECTION

NTS



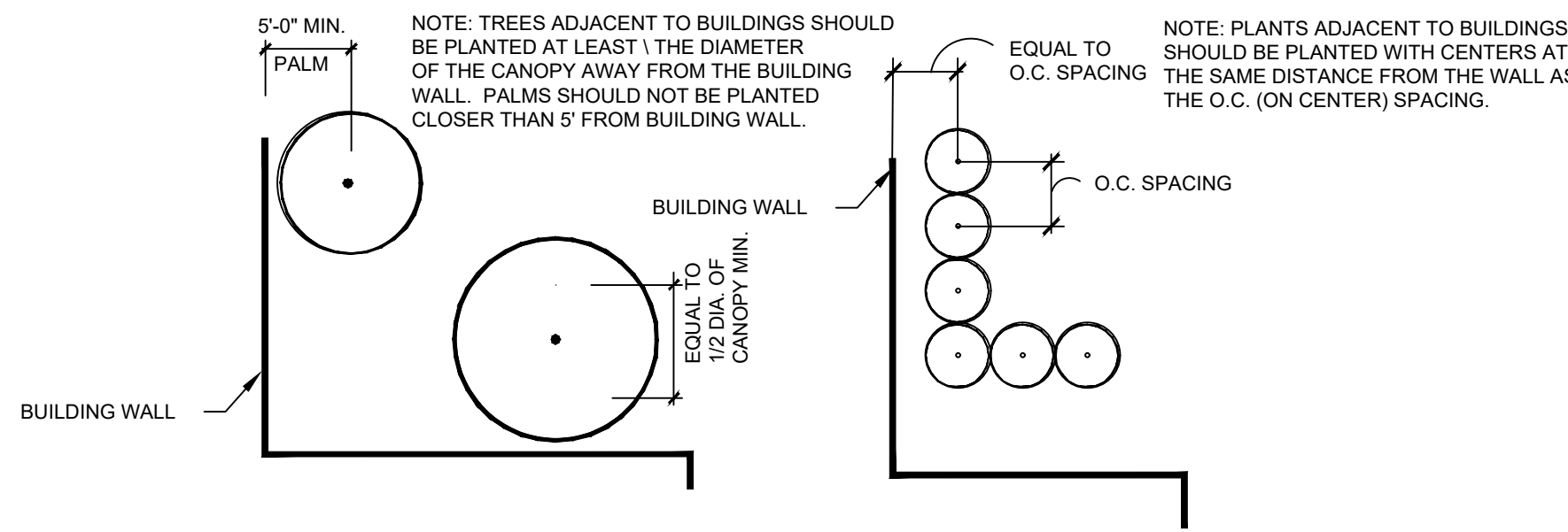
4 SABAL PALM
SECTION

NTS



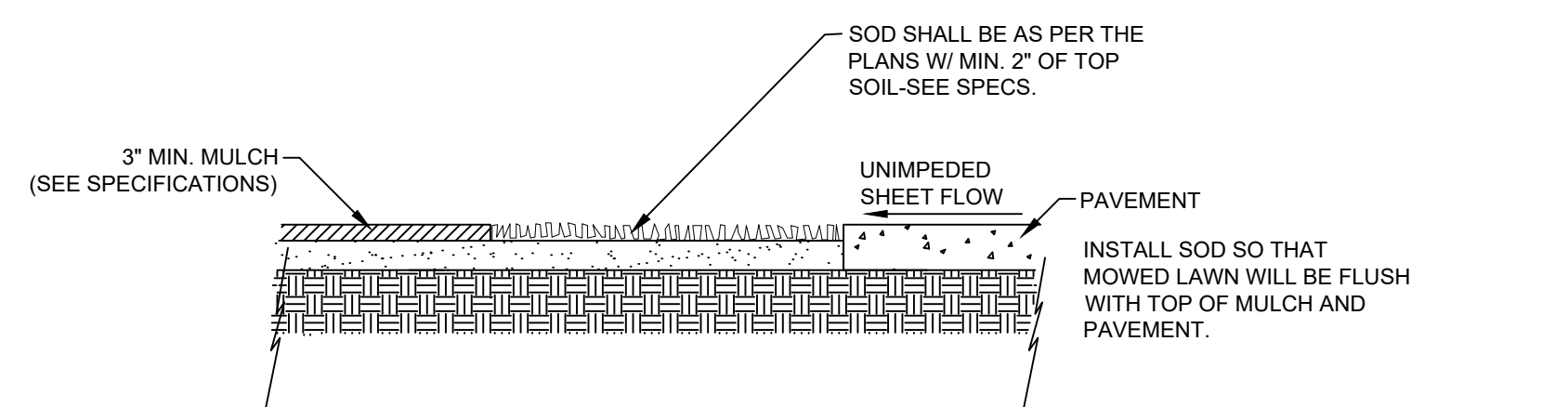
5 SHRUB PLANTING
SECTION

NTS



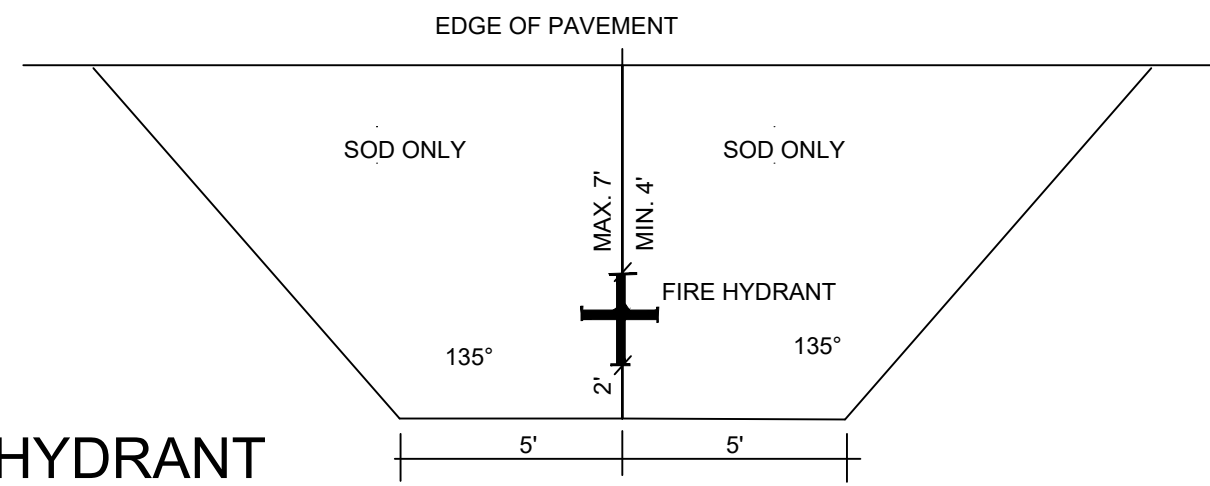
6 PLANTING ADJACENT TO BUILDING
SECTION

NTS



7 SOD INSTALLATION
SECTION

NTS



8 FIRE HYDRANT
SECTION

NTS

DRC

PZ24-12000026
07.02.2025

CRAVEN • THOMPSON AND ASSOCIATES, INC.
ENGINEERS • PLANNERS • SURVEYORS
3563 N.W. 53RD STREET, FORT LAUDERDALE, FLORIDA 33309
TEL: (954) 739-6409
FAX: (954) 739-6400
FLORIDA LICENSED PROFESSIONAL SURVEYING & MAPPING BUSINESS NO. 271
FLORIDA LICENSED LANDSCAPE ARCHITECTURE BUSINESS NO. C000114
MATERIAL SHOWN HEREIN IS THE PROPERTY OF CRAVEN THOMPSON & ASSOCIATES, INC. AND SHALL NOT BE REPRODUCED OR TRANSMITTED IN ANY FORM OR BY ANY MEANS, ELECTRONIC OR MECHANICAL, INCLUDING PHOTOCOPYING, RECORDING, OR BY ANY INFORMATION STORAGE AND RETRIEVAL SYSTEM, WITHOUT THE WRITTEN PERMISSION OF CRAVEN THOMPSON & ASSOCIATES, INC.

ATLANTIC FLEET WASH
1501 WEST ATLANTIC BLVD.
POMPANO BEACH, FLORIDA
PREPARED FOR:
KAJA PROPERTIES INC.
LANDSCAPE DETAILS

Nicole D. Pastre
Florida R.L.A. No. 6667397
2025-05-27
PROJECT NO.
24-0055-001-01
LP-6
SHEET ____ OF ____